

8. Figure 13–3 illustrates the gross anatomy of the lower respiratory system. Intact structures are shown on the left; respiratory passages are shown on the right. Select a different color for each of the structures listed below and use it to color in the coding circles and the corresponding structures on the figure. Then complete the figure by labeling the areas/structures that are provided with leader lines on the figure. Be sure to include the following: pleural space, mediastinum, apex of right lung, diaphragm, clavicle, and the base of the right lung.

- |                                   |   |                                       |
|-----------------------------------|---|---------------------------------------|
| <input type="radio"/> Trachea     | <input type="radio"/> Primary bronchi   | <input type="radio"/> Visceral pleura |
| <input type="radio"/> Larynx      | <input type="radio"/> Secondary bronchi | <input type="radio"/> Parietal pleura |
| <input type="radio"/> Intact lung |   |                                       |

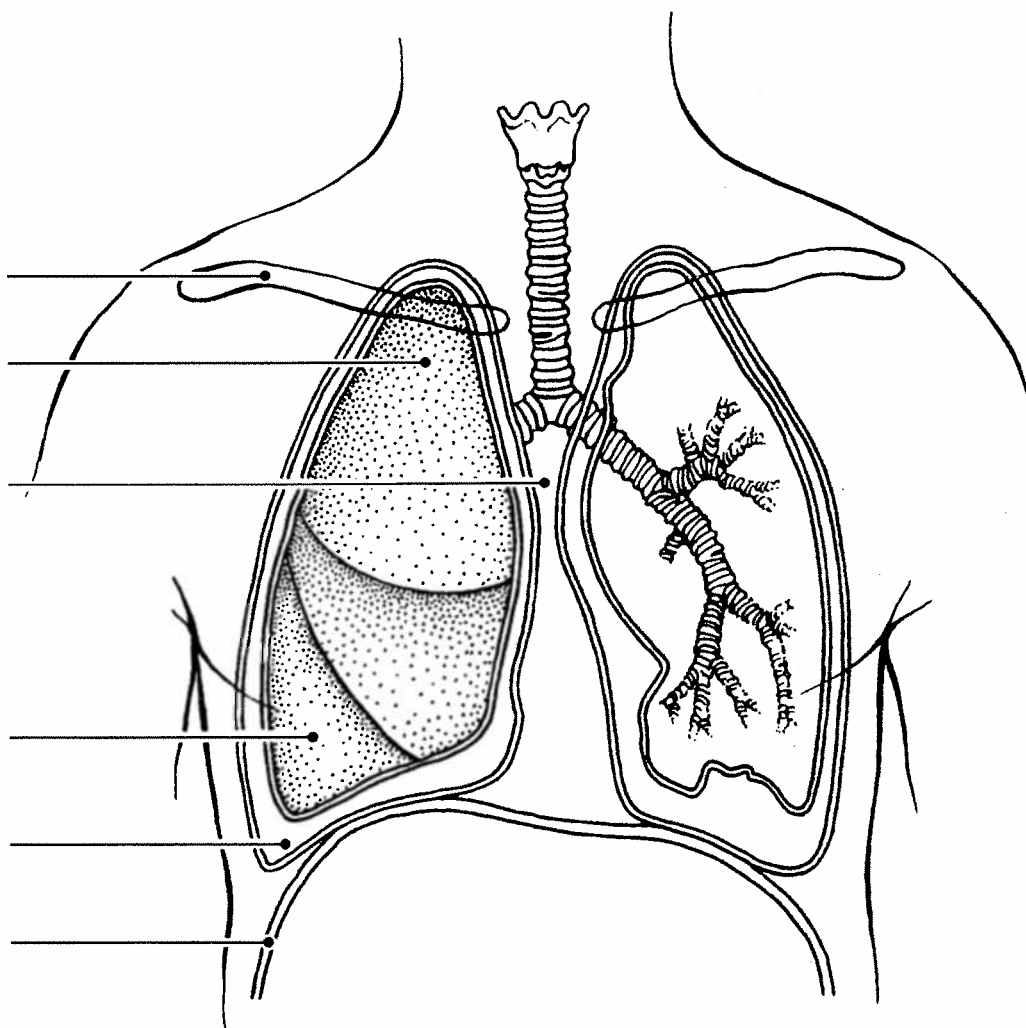


Figure 13–3